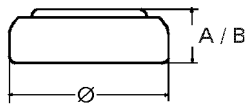


Data Sheet



Type Number	24626
Designation IEC	LR 9
System	Manganese Dioxide / Zinc / KOH - Electrolyte
Nominal Voltage	1,5 V
Typical Capacity C	210 mAh
Load 300 Ohm, at 20°C down to 0.9 V	
Weight (approx.)	2,9 g
Volume	1,01 ccm
Coding	Date of Manufacturing Month/Year
Temperature Ranges	
Storage	min max. -10°C 65°C
Discharge	-10°C 65°C
Dimensions	
Diameter (Ø)	min max. 15,20 16,00
Height (A/B)	5,6 6,20

Typical Capacities (at 20°C)

Discharge Type	Load	End Voltage:	0.9 V
Continuous 24h/d,7d/w Current [µA]:	300 Ω	Time: Capacity [mAh]: Energy [mWh]:	50 h 210 250

* Contact VARTA if the application is intended to be outside the range of -10°C to +65°C.

*Information and contents in this data sheet are for reference purpose only.
They do not constitute any warranty or representation and are subject to change without notice.
For most current information and further details, please contact your VARTA representative.*