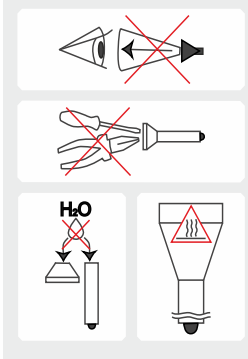


## Warnings

The flashlight will get hot in Turbo mode quickly and discharge the battery by high current. Don't leave it without your attention as very bright light can heat objects and be a cause of the fire.



1. Always follow the instructions from this manual and recommendations on battery usage.
2. Apply only the recommended power sources.
3. Do not reverse battery polarity.
4. Do not use different power sources together, i.e. old ones with new ones, charged with discharged. Do not use different types of batteries combined as the element with less capacity can be damaged.
5. Do not modify or recast the flashlight and its components as it will deprive you of the warranty.
6. Do not allow water or any other liquid to leak into the flashlight.
7. Do not aim a switched-on flashlight at people's or animals' eyes – it can cause temporary blindness.
8. Do not allow children to use the flashlight without your assistance.

**!** The producer will not be liable for any harm done to the user if it was caused by improper use of the product.

## Care and Storage

It is recommended to clean the threads and O-rings off dirt and old grease once or twice per year. Remember that reliable protection from water and dust cannot be provided by worn out sealing. The fouling as well as lack of lubricant cause fast wear-out of threads and sealing rings.

### To clean the threads do the following:

1. Unscrew the tailcap and remove the sealing ring carefully with a toothpick (do not use sharp metal things as they can damage the ring).
2. Wipe the sealing ring thoroughly with a soft cloth (or tissue). Do not use solvents. If the sealing ring is worn out or damaged replace it by a new one.
3. Clean the metal threads with a brush using ethanol. Be careful not to allow the applied liquid to get inside the flashlight or tailcap as it can cause fails in functionality of the flashlight.

After cleaning lubricate the thread and the sealing ring with polyalphaolefin-based silica grease, e.g. Nyogel 760G. The application of automotive and other improper grease can cause swelling and damage of the sealing rings.

In case of active operation and exploitation in dusty environments, it is recommended to perform cleaning and lubricating of the parts as often as required.

**!** We DO NOT RECOMMEND to leave power sources inside the flashlight for a long storage period, as batteries (especially, non-rechargeable) can leak for various reasons and damage the inner parts of the flashlight. If you want to keep your flashlight in a stand-by state with batteries in then use new and high-quality batteries and store the flashlight in acceptable for batteries operational temperature and revise the batteries' state at least once a month. If you have noticed any signs of batteries' defects then withdraw them from the flashlight and utilize. It is also recommended to replace discharged batteries with new ones before the storage as the chance of leakage is higher with discharged batteries.

## Service and Warranty

Armytek provides free warranty repair for 10 years from the date of purchase.

### Warranty doesn't cover damage caused by:

1. Improper usage.
2. Attempts to modify or repair the flashlight by nonqualified specialists.
3. Longtime application in chlorinated or polluted water, or other liquids (other than water).
4. High temperatures and chemicals' exposure (including the exposure of liquid from defected batteries).
5. Usage of low-quality batteries.

### Armytek Optoelectronics Inc.

Web: [www.armytek.com](http://www.armytek.com) Email: [service@armytek.com](mailto:service@armytek.com)  
Address: 13-85 West Wilmot St, Richmond Hill, Ontario, L4B 1K7, Canada

Specifications are subject to change without notice.

# Tiara PRO

THE MOST TECHNICALLY ADVANCED  
FLASHLIGHTS IN THE WORLD

## USER MANUAL

Thank you for choosing the products of Armytek Optoelectronics Inc., Canada.  
Please read this manual carefully before using the flashlight.

## Specifications

Armytek Optoelectronics Inc. is a Canadian manufacturer that produces powerful and reliable flashlights designed especially for your needs. The components made in the USA and Japan. **10 years no-hassle warranty.**

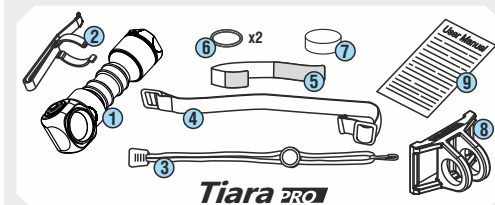
- Superb light of amazing constant brightness due to powerful electronics.
- Multi-flashlight "10 in 1" is for many activities: car, fishing, hunting, home, work, city, picnic, bike, outdoor, travel.
- Efficient TIR-optics and no "tunnel vision" effect even after continuous use.
- Multicolor Warning Indication of low battery level.
- Side switch for comfortable one-hand operation and easy modes switching with advanced operation.
- Multicolor State Indication and ultra low current drain in OFF-state – more than 25 years.
- Comfortable headband for reliable fixation of the flashlight – it won't slip even while you're running.
- Solid body without long wires, weak rubber connectors and unnecessary boxes.
- Removable magnet in the tailcap, removable clip, strong lanyard and possibility of tail-stand for multipurpose use.
- Compact and light-weight flashlight of guaranteed durability stands up harsh impacts and falling from 10 meters.
- Total protection from water, dirt and dust penetration – flashlight continues to work even at the depth of 10 meters.

Model	Tiara A1 Pro	Tiara C1 Pro
LED / Optics	Cree XP-L or XM-L2 / TIR	Cree XP-L or XM-L2 / TIR
Brightness stabilization type	FULL (constant light)	FULL (constant light)
Light output, LED / OTF lumens*	600 / 450	800 / 610
Peak beam intensity, candelas	1840	2160
Hotspot / spill	70° / 120°	70° / 120°
Beam distance*	86 meters	93 meters
Modes, light output and runtimes (measured with Sanyo Eneloop AA 2000 mAh / Armytek CR123A 1500 mAh until the light output drops to 10% of the initial value)	Turbo2	450 lm / 0.8h
	Turbo1	250 lm / 1.2h
	Main3	90 lm / 4.2h
	Main2	30 lm / 11.7h
	Main1	9 lm / 35h
	Firefly2	1.9 lm / 8d
	Firefly1	0.15 lm / 90d
	Strobe3	1Hz / 30lm / 60h
Strobe2	1Hz / 450lm / 6h	
Strobe1	10Hz / 450lm / 1.7h	10Hz / 610lm / 1.7h
Power source	1xAA / 1x14500 Li-Ion	1x18350 Li-Ion / 1xR123 Li-Ion / 1xCR123A
Size and weight (without batteries)	Length 93mm, body diameter 24.5mm, head diameter 29mm, weight 59g	Length 79mm, body diameter 24.5mm, head diameter 29mm, weight 56g

\* Light output for flashlights with Warm light are about 7% less, beam distances are about 3% less.

**!** We DO NOT RECOMMEND to use low-quality CR123A batteries, because they can explode.

## Set description



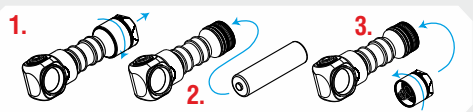
### Items included in the package:

- |                |                     |
|----------------|---------------------|
| 1 - Flashlight | 6 - 2 spare O-rings |
| 2 - Clip       | 7 - Magnet          |
| 3 - Lanyard    | 8 - Silicone holder |
| 4 - Headband   | 9 - User manual     |
| 5 - Hand band  |                     |



- ✓ Depending on the model, your flashlight can inconsiderably differ from the pictures in the manual.
- ✓ The producer reserves the right to change the package at his own discretion without modifying this manual.

## Initial Service



### To set/replace batteries:

1. Unscrew the tailcap.
2. Place the batteries with the positive contact (+) facing the head of the flashlight.
3. Adjust the tailcap and tighten it as far as it can go.

The flashlight is ready for operation.

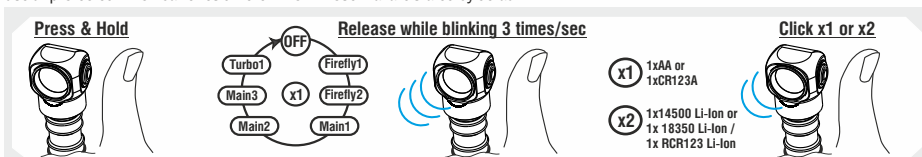


### The removable magnet in the tailcap.

With its help you can easily attach the flashlight to an electric service panel, a bike handlebar, above a car wheel, etc. The magnet can be taken out of the tailcap. To do this unscrew the small cover at the end of the tailcap and put the magnet out.

### Specifying the battery type for correct voltage indication.

1xAA (for Tiara A1 Pro) / 1xCR123A (for Tiara C1 Pro) battery is by default. Do not specify the type of power source manually unless you use unprotected Li-Ion batteries different from those that are stated by default.



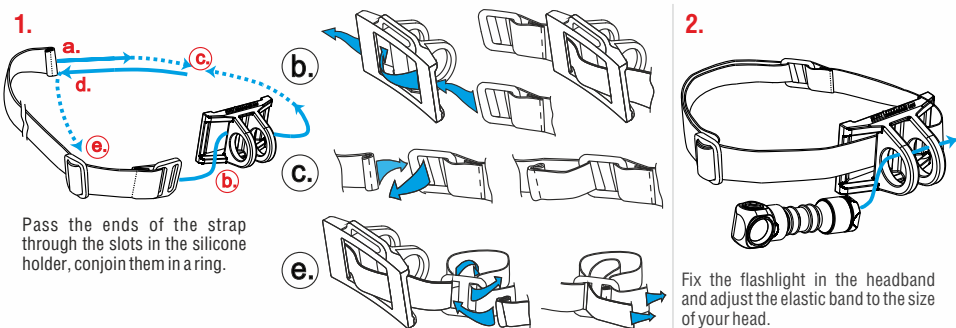
To access the Menu press and hold the switch button (when the flashlight is switched off). It will switch on, go through 6 modes, then after 2sec in Turbo1 mode – enter to Menu and flash about 3 times a second.

Now you can specify the battery type:

- 1 click for AA (Tiara A1 Pro) / CR123A (Tiara C1 Pro).
- 2 clicks for 14500 Li-Ion (Tiara A1 Pro) / 18350 Li-Ion or RCR123 Li-Ion (Tiara C1 Pro).

After the choice is made the light will flash 1 or 2 times to show the battery type chosen.

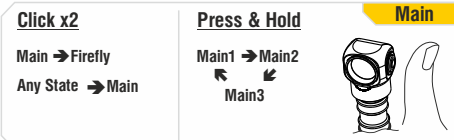
### To use the head mount with the flashlight:



Pass the ends of the strap through the slots in the silicone holder, conjoin them in a ring.

Fix the flashlight in the headband and adjust the elastic band to the size of your head.

## Operation



### Main

### The flashlight has 4 Sections of modes:

- [Section1] – Firefly modes
- [Section2] – Main modes
- [Section3] – Turbo modes
- [Section4] – Special modes

### In OFF state:

Click: To turn on the last used mode.

Press and hold: To turn on Firefly1 mode in [Section 1].

### In ON state:

Click: To turn off the flashlight.

Press and hold: To start cycling through the modes of actual Section.

### The same in OFF & ON states:

2 clicks: To turn on the Main mode [Section 2]. Then double clicks will switch modes between chosen modes in [Section 1] and [Section 2].

3 clicks: To turn on Turbo mode [Section 3].

4 clicks: To turn on Strobe mode [Section 4].

Automemorizing. After switching off the last used Mode is memorized for quick 1-click access at next switching on.

Lock-out function. Unscrew the tailcap to 1/4 for the protection from accidental switching on. State Indication will be turned off.

Constant light. Powerful electronics provide constant brightness even in the Turbo1 mode, using all energy of the battery. And the Turbo2 mode gives the maximum brightness as the Overboost technology in cars, but until discharge current of the battery don't exceed critical values.

Digital Light Stabilization & Safe Soft-Start System monitors battery voltage, starts the flashlight at an admissible brightness or decreases it by steps when the voltage dramatically fall down. These actions increase runtime, use all available energy, get longer lifetime of rechargeable battery and protect it from overdischarge or overheating.

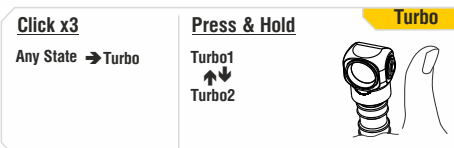
Multicolor Voltage Indication. Shows the battery level by short flashes every 5 seconds. There is no Voltage Indication in OFF state and Firefly modes.

### Warning Indication - Low Battery Level.

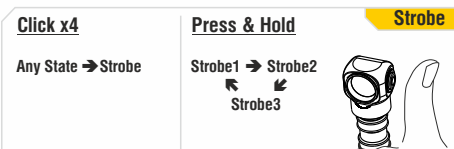
When it is < 25%, the color LED will show the warning level – flashing in orange color once in 2 second. With a further voltage reducing brightness will start to decrease in steps for safety of the battery and user. If brightness will be < 25% from nominal value, the main LED will flash 2 times. Critical battery level < 10% is red indicated once a second.



### Firefly

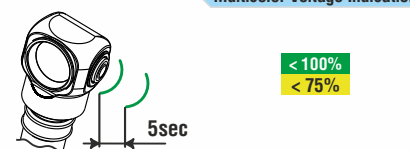


### Turbo



### Strobe

### Multicolor Voltage Indication



### Warning Indication

